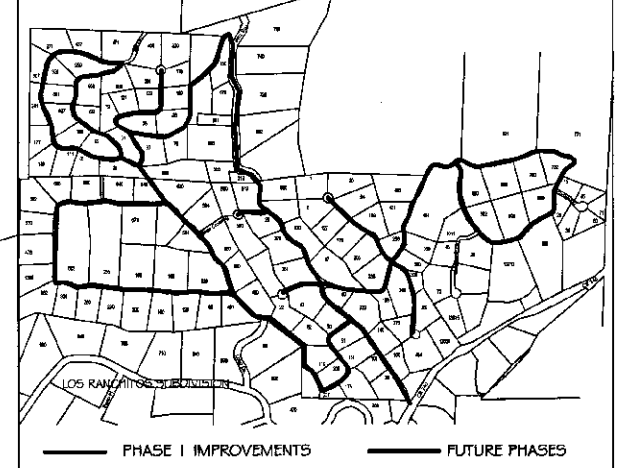
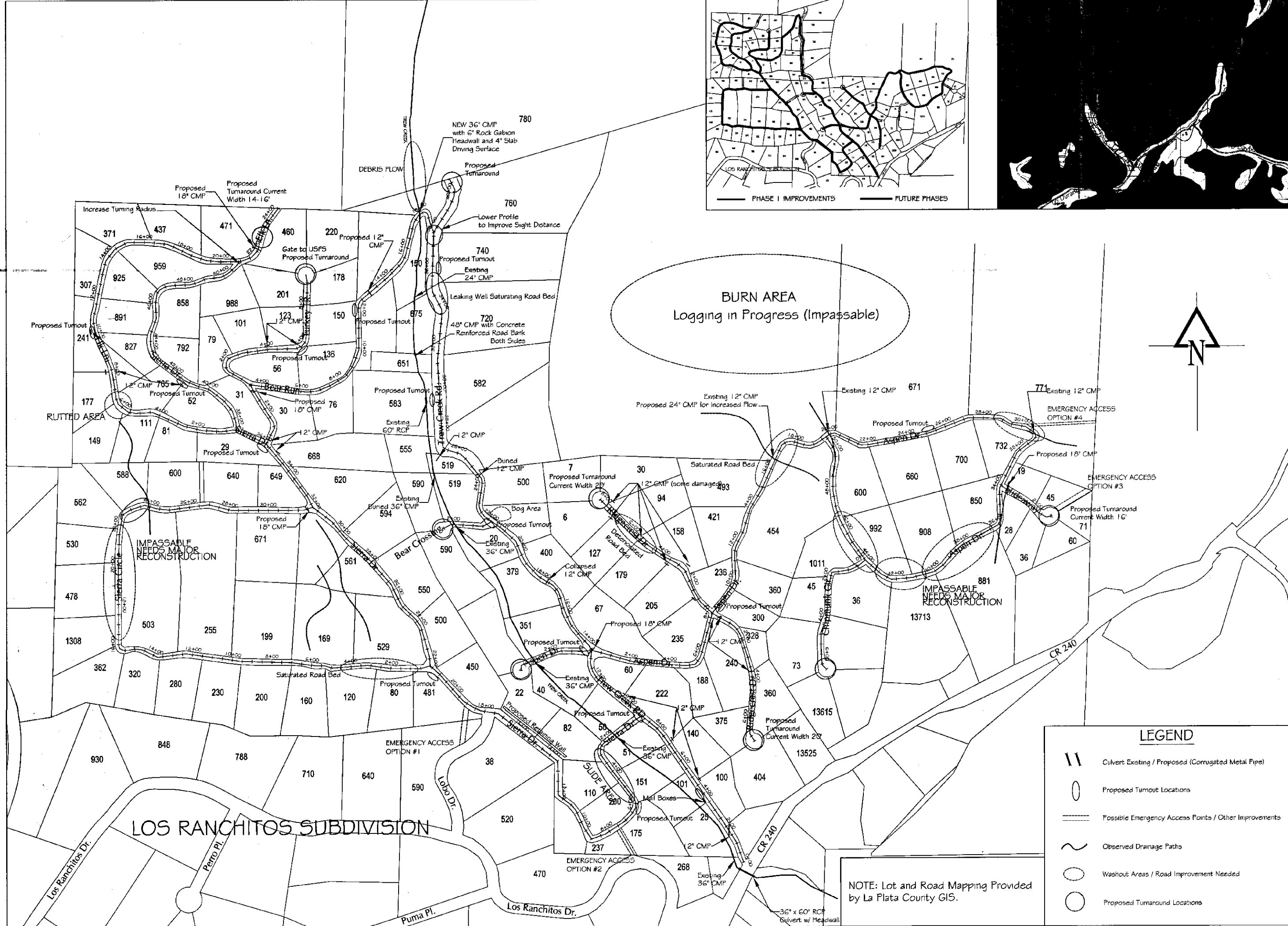
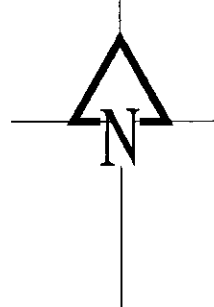


ASPEN TRAILS SUBDIVISION
Inventory and Improvement Plan

DRAWN BY: CMC
 CHECKED: MR
 SCALE: 1" = 200'
 ACAD FILE:
 DATE: 10/01/02
 REVISIONS:
 Additional Inventory 1/14/03



BURN AREA
 Logging in Progress (Impassable)



LEGEND

- Culvert Existing / Proposed (Corrugated Metal Pipe)
- Proposed Turnout Locations
- Possible Emergency Access Points / Other Improvements
- Observed Drainage Paths
- Washout Areas / Road Improvement Needed
- Proposed Turnaround Locations

NOTE: Lot and Road Mapping Provided by La Plata County GIS.