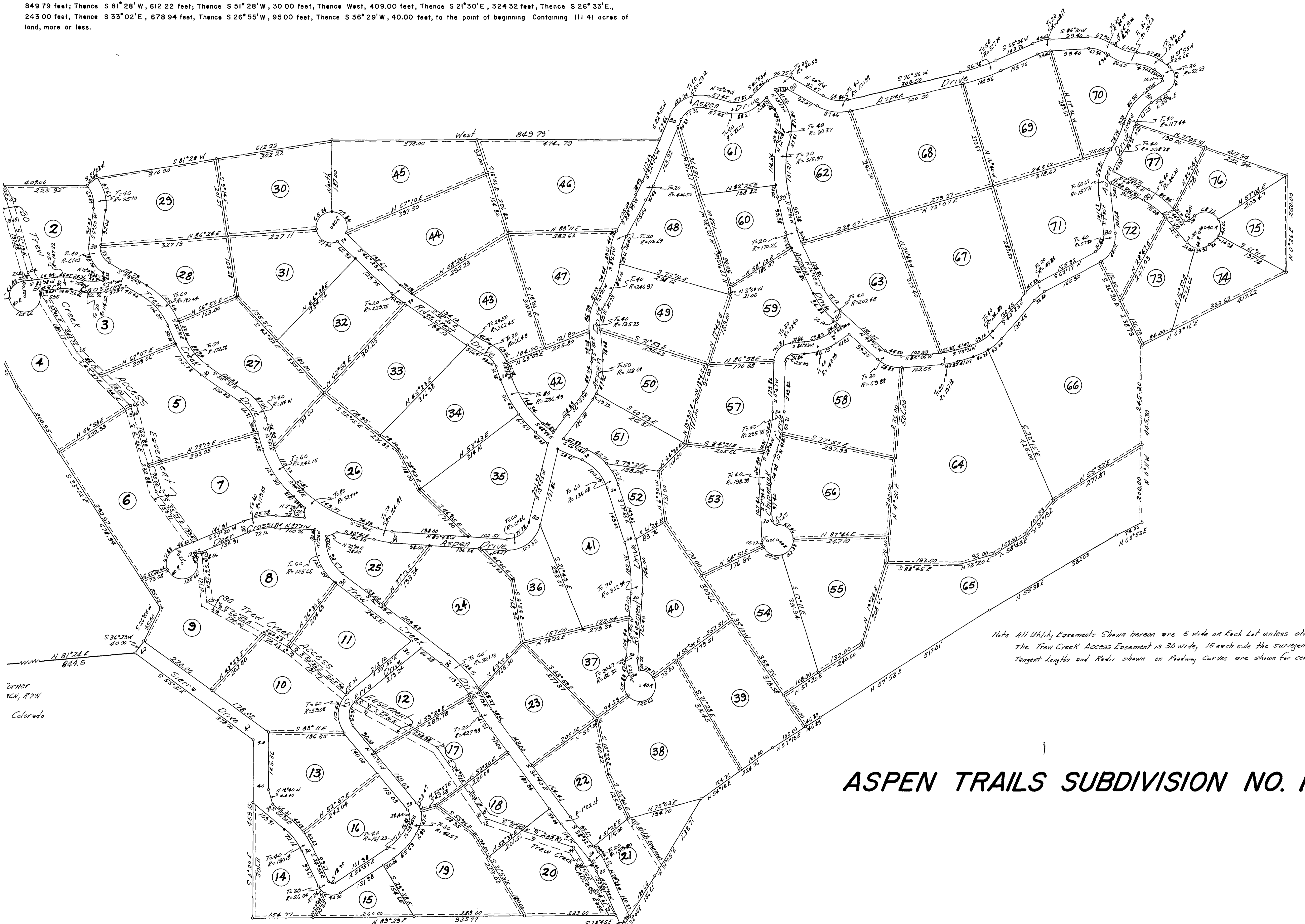


TRACT DESCRIPTION

Beginning at a point which bears N 81° 24' E, 844.5 feet from the West One-Quarter Corner of Section 30, Township 36 North, Range 7 West, N.M.P.M., LaPlata County, Colorado; Thence along the existing property line fence S 53° 31' E, 378.0 feet; Thence S 0° 20' E, 459.15 feet; Thence N 89° 29' E, 935.77 feet to a point on the East Bank of Trew Creek; Thence S 28° 45' E, 37.45 feet to the North Right-of-Way line of a County Road; Thence along the said North Right-of-Way of the County Road N 32° 09' E, 156.61 feet; Thence N 31° 05' E, 233.71 feet; Thence N 54° 14' E, 224.78 feet; Thence N 57° 19' E, 146.83 feet; Thence N 57° 53' E, 517.01 feet; Thence N 59° 30' E, 392.03 feet; Thence N 63° 53' E, 74.36 feet; Thence, leaving the County Road, bear N 0° 11' W, 445.30 feet; Thence N 63° 16' E, 417.62 feet; Thence N 0° 26' E, 250.00 feet; Thence N 71° 05' W, 412.94 feet to a point on the East Right-of-Way line of a road within the Subdivision of Aspen Trails Subdivision No. 1; Thence around a curve to the right, with radius of 102.44 feet, a distance of 67.25 feet; Thence around a curve to the left, with radius of 37.23 feet, a distance of 69.49 feet; Thence N 51° 55' W, 25.65 feet; Thence around a curve to the left, with radius of 100.24 feet, a distance of 67.95 feet; Thence around a curve to the right, with radius of 96.62 feet, a distance of 61.52 feet; Thence N 54° 13' W, 8.90 feet; Thence around a curve to the left, with radius of 99.09 feet, a distance of 67.90 feet; Thence S 86° 31' W, 99.40 feet; Thence around a curve to the left, with radius of 123.17 feet, a distance of 45.02 feet; Thence S 65° 34' W, 103.76 feet; Thence around a curve to the right, with radius of 502.70 feet, a distance of 96.78 feet; Thence S 76° 36' W, 300.50 feet; Thence around a curve to the right with radius of 85.98 feet, a distance of 64.84 feet; Thence N 60° 11' W, 92.07 feet; Thence around a curve to the left, with radius of 55.59 feet, a distance of 70.75 feet; Thence S 46° 53' W, 55.42 feet; Thence around a curve to the right, with radius of 57.21 feet, a distance of 57.87 feet; Thence N 75° 09' W, 57.45 feet; Thence around a curve to the left, with radius of 84.12 feet, a distance of 120.24 feet; Thence S 22° 56' W, 67.46 feet; Thence, leaving the road, bear West, 849.79 feet; Thence S 81° 28' W, 612.22 feet; Thence S 51° 28' W, 30.00 feet; Thence West, 409.00 feet; Thence S 21° 30' E, 324.32 feet; Thence S 26° 33' E, 243.00 feet; Thence S 33° 02' E, 678.94 feet; Thence S 26° 55' W, 95.00 feet; Thence S 36° 29' W, 40.00 feet, to the point of beginning Containing 111.41 acres of land, more or less.



DEDICATION:

Know all men by these presents That Aspen Trails Development Co, Inc, a Colorado Corporation, as sole Owner, and AUSTIN D DECKER and VERA M DECKER, as Mortgagees, of the following described property situated in Section 30, Township 36 North, Range 7 West, N.M.P.M., LaPlata County, Colorado (See Tract Description Shown Hereon) have caused the same to be surveyed, laid out and platted under the name and style of ASPEN TRAILS SUBDIVISION NO 1, said subdivision consisting of 78 lots as shown on this Plat. Roads and easements as shown on this Plat are hereby dedicated for the use and benefit of the lot owners only in ASPEN TRAILS SUBDIVISION NO 1 and present or future owners of lands described in Warranty Deed dated Nov 8, 1965 and recorded Nov 19, 1965 in Book 495, Pages 289-290 of the Records of the County Clerk's Office, LaPlata County, Colorado. Use of surface water for domestic, irrigation or commercial purposes is expressly reserved unto Owner.

In Witness Whereof, the said Aspen Trails Development Co, Inc., and AUSTIN D. DECKER and VERA M. DECKER have hereunto set their hands and seals this _____ day of July, 1966.

Aspen Trails Development Co, Inc A Colorado Corporation Attest: Ralph B. Strickland Secretary By: Gene H. Holmes President Austin D. Decker Vera M. Decker Mortgages

STATE OF COLORADO COUNTY OF LAPLATA The foregoing instrument was acknowledged before me this 27th day of July 1966 by GENE H. HOLMES, President of Aspen Trails Development Co, Inc a Colorado Corporation, on behalf of said Corporation. Notary Public My Commission Expires January 17, 1967

STATE OF COLORADO COUNTY OF LAPLATA The foregoing instrument was acknowledged before me this 27th day of July 1966 by AUSTIN D DECKER and VERA M DECKER. Notary Public My Commission Expires April 6, 1969

This Plat approved by the LaPlata County Planning Board this 27th day of July 1966 Chairman Secretary

This Plat and the statements thereon, approved by the County Commissioners of the County of LaPlata, State of Colorado, this 28th day of July 1966 Chairman, Board of County Commissioners

ENGINEER'S CERTIFICATION I, E. L. POTEET hereby certify the Plat and description shown hereon were prepared from field notes of an actual survey made on the ground by me and at my direction. E. L. POTEET 7/25/66 Reg P E & L.S., COLO REG NO 4476

POTEET ENGINEERING CO. FARMINGTON, N.M. JULY 25, 1966

ASPEN TRAILS SUBDIVISION NO. 1